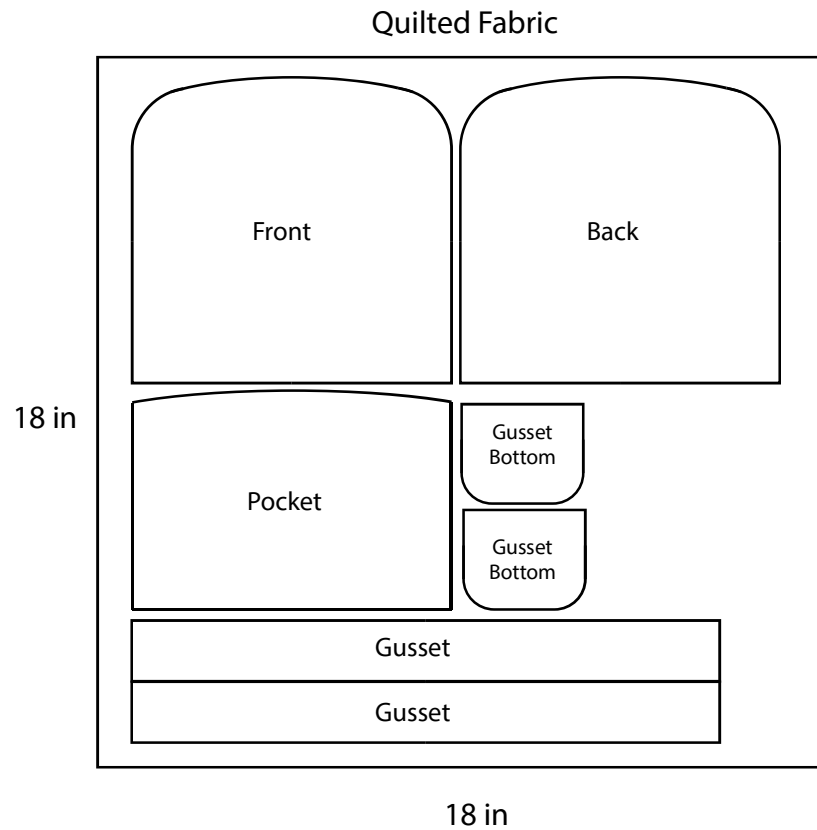
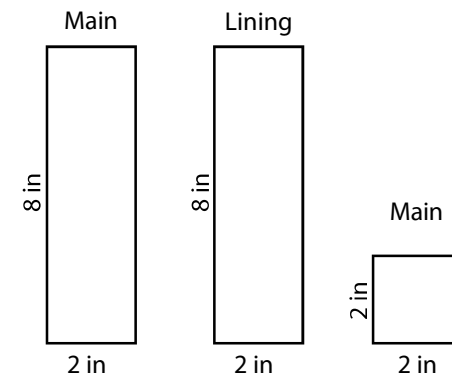


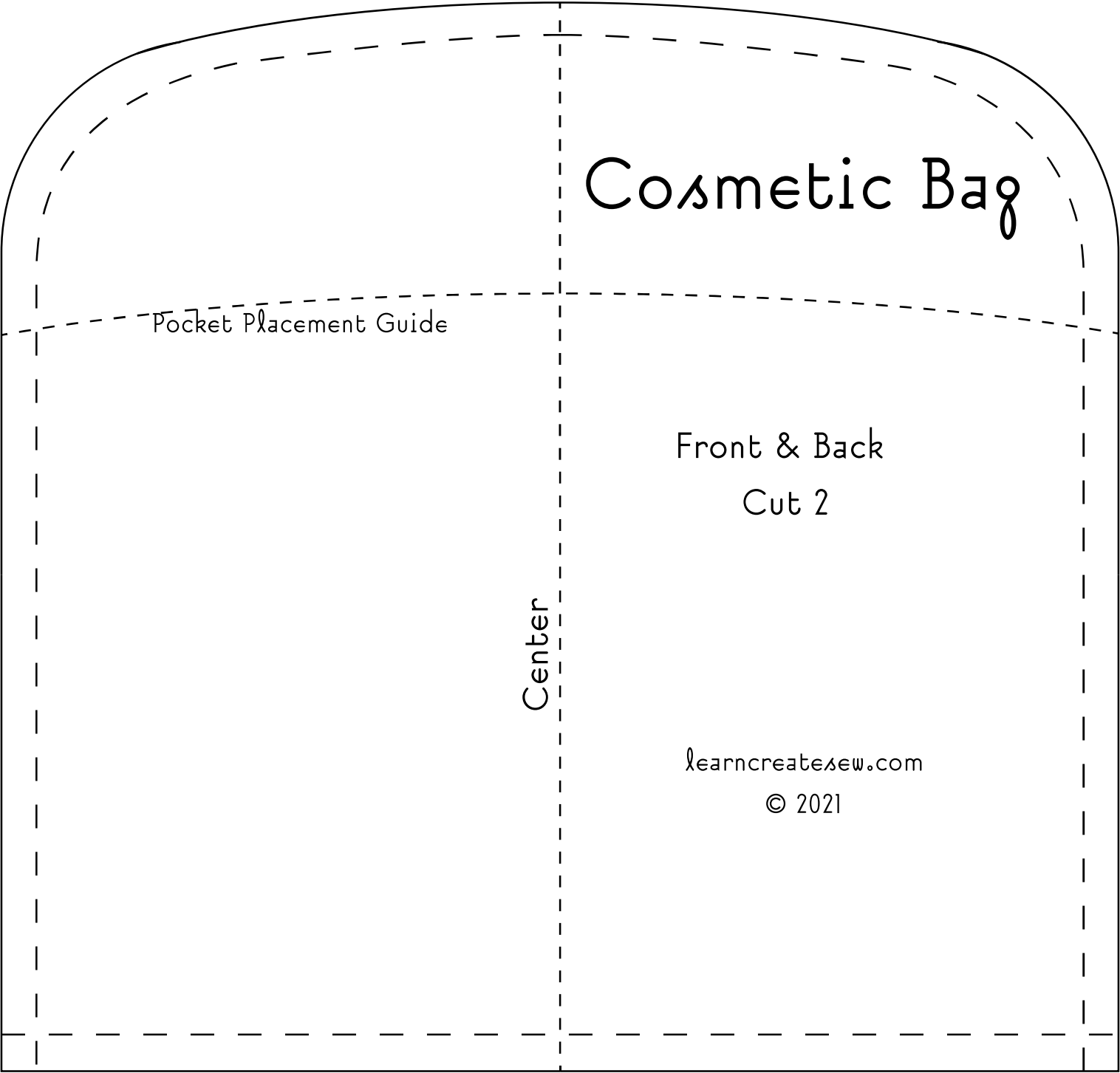
Cosmetic Bag Cut Layout



Single Layer fabrics (for tab & handle)



Optional Interfacing - Cut two rectangles, one 2 x 7.5 inches and one 2 x 1.5 inch



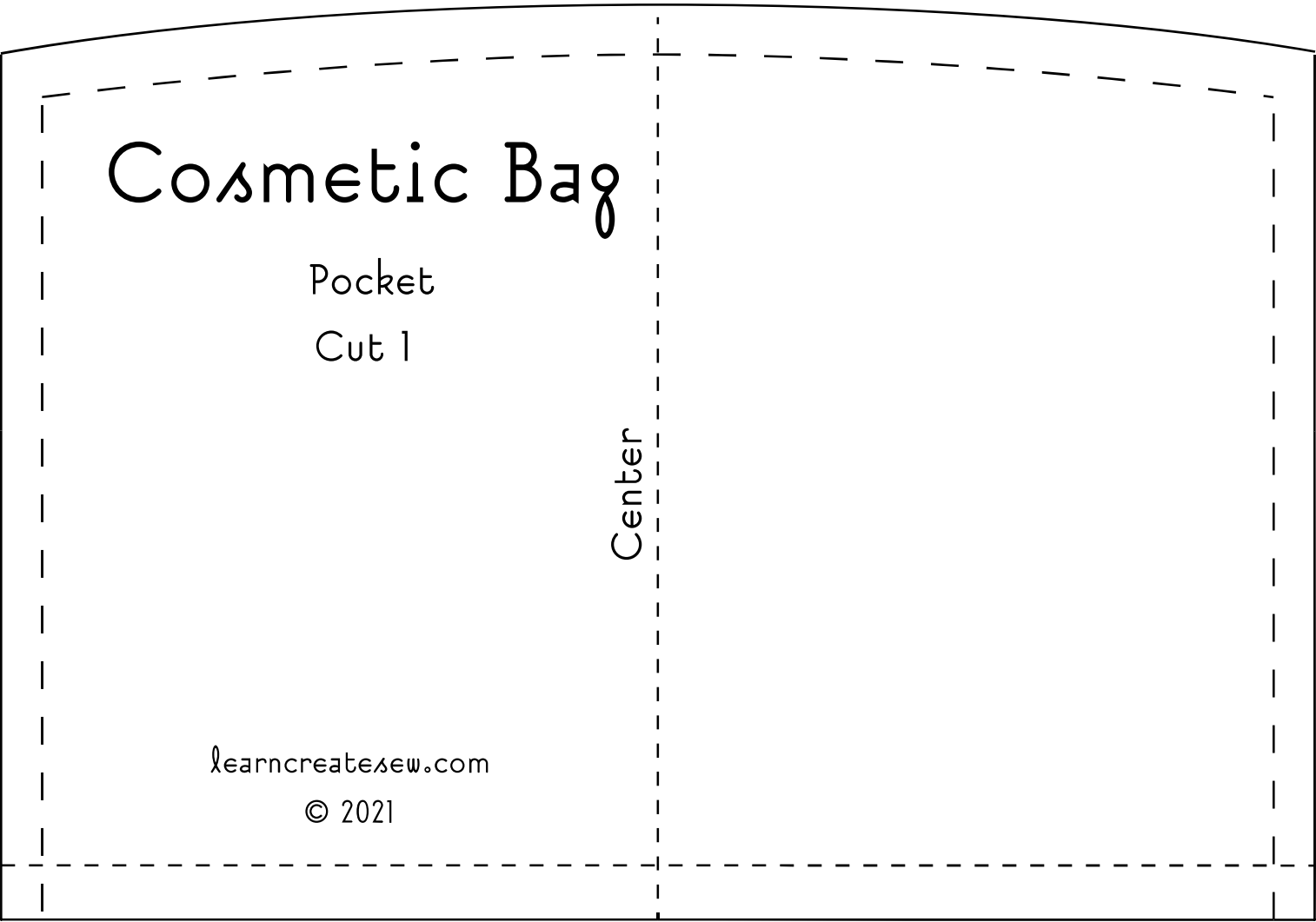
Cosmetic Bag

Pocket Placement Guide

Front & Back
Cut 2

Center

learncreatesew.com
© 2021



Cosmetic Bag

Pocket

Cut 1

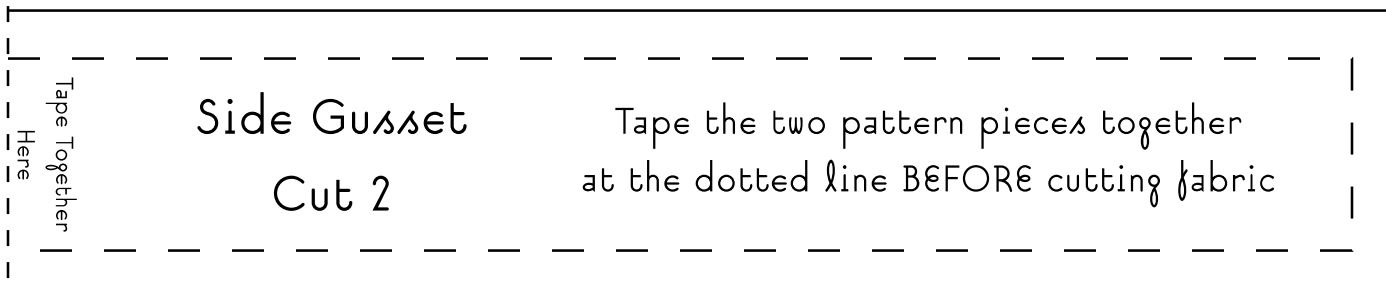
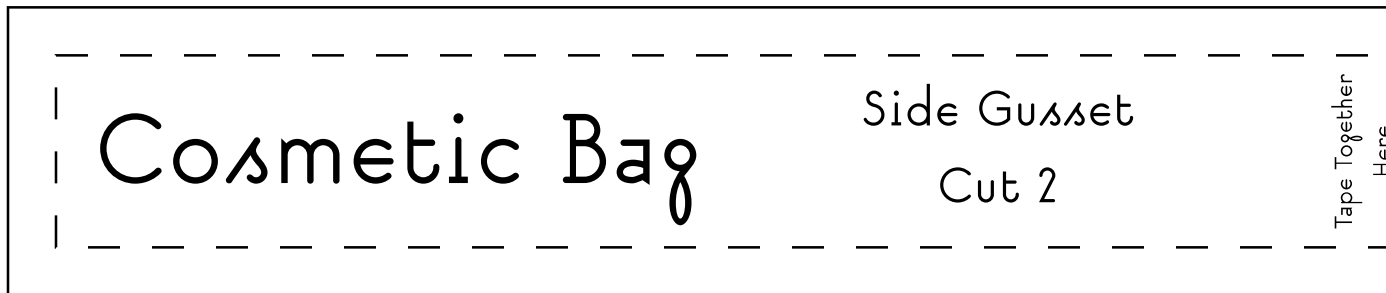
Center

learncreatesew.com

© 2021



Tape the two side gusset pattern pieces together at the dotted line
BEFORE cutting fabric



Cosmetic Bag Supply List

Supplies:

- 5/8 yard cotton fabric for the exterior of the bag (You can use a fat quarter, but it can be a tight fit)
- 5/8 yard cotton fabric for the interior of the bag (You can use a fat quarter, but it can be a tight fit)
- 18 x 18 or larger square of foam interfacing (I used Pellon's naked Flex-Foam)
- One 14-inch or longer zipper (I used nylon coil purse zippers size 4.5)
- One 8-inch or longer zipper (I used nylon coil purse zippers size 3)
- Approximately 2 yards of 1/2 inch wide single-fold bias tape OR a fat quarter to make your own
- 1/8 yard or scraps of lightweight fusible interfacing (optional)
- Coordinating Thread to match exterior fabric, interior fabric, and zippers

* You can use pre-quilted fabric for this project if you prefer.

You will need an 18 x 18-inch square as well as additional coordinating single-layer fabrics for the handle and tab.

Tools:

- Basic sewing tools and sewing machine
- A fabric marking tool that vanishes or washes away (I used Air Erase Markers)
- Multiple bobbins, one for each coordinating thread color
- Ruler
- Walking Foot (recommended) and walking foot guide (optional)
- Fabric Clips (recommended)
- Tailor's Clapper (optional)
- Sewing stiletto (recommended - I used a Purple Thang, you can also use the back edge of your seam ripper)
- Safety goggles or safety eyewear (recommended if using short or metal zippers)