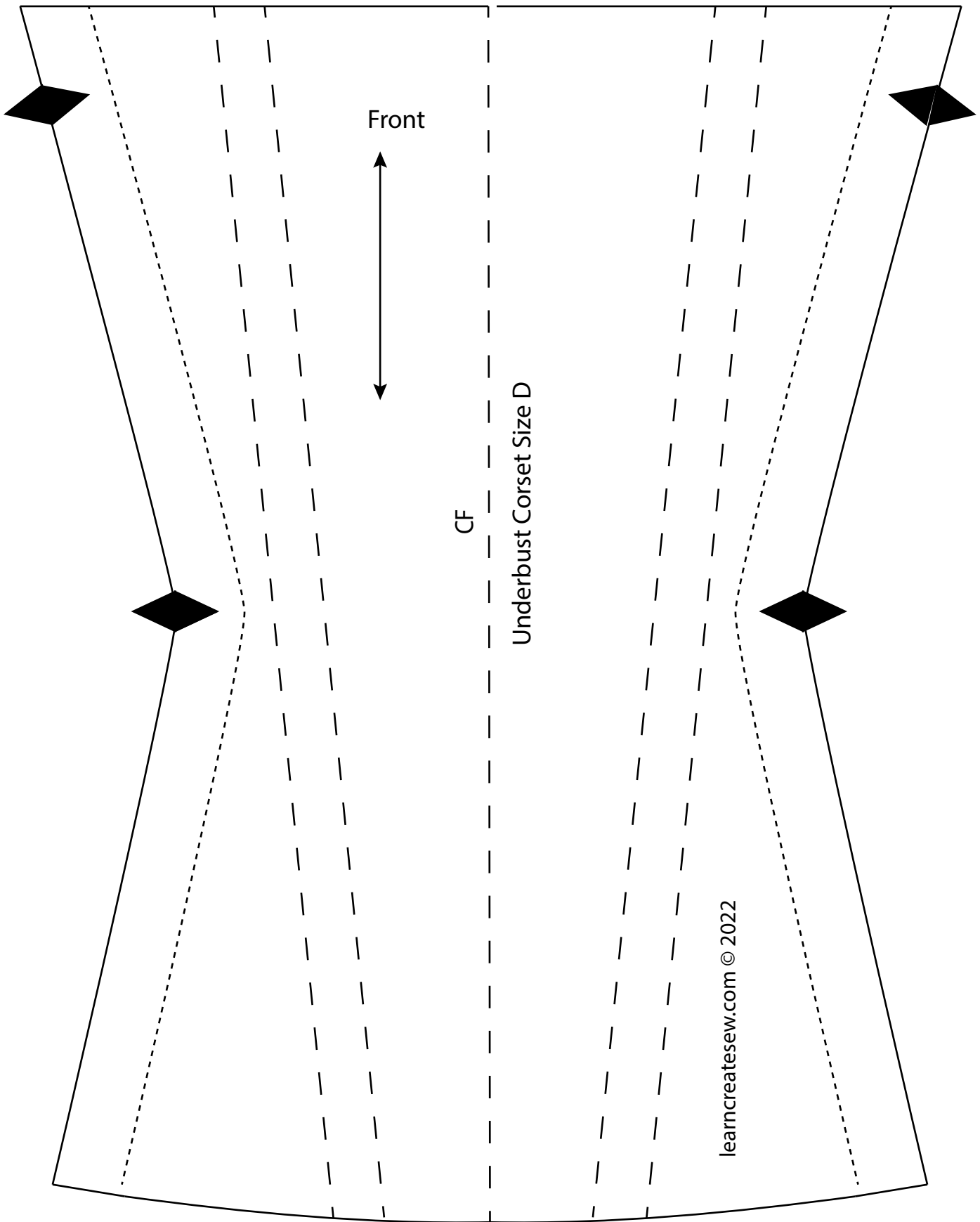
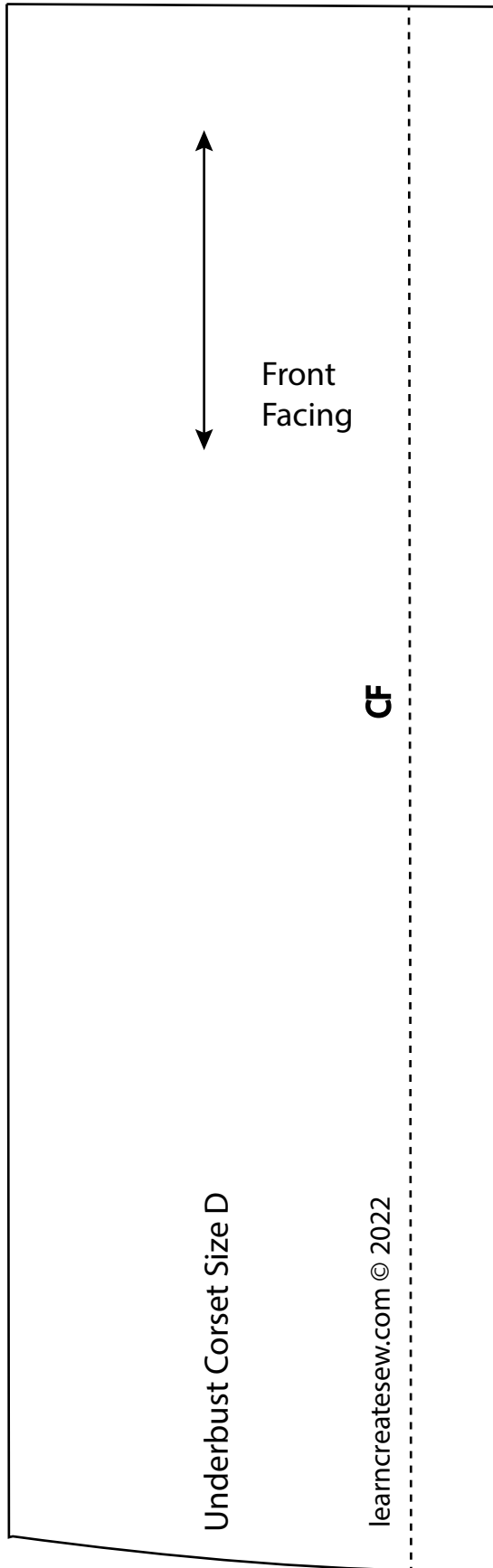


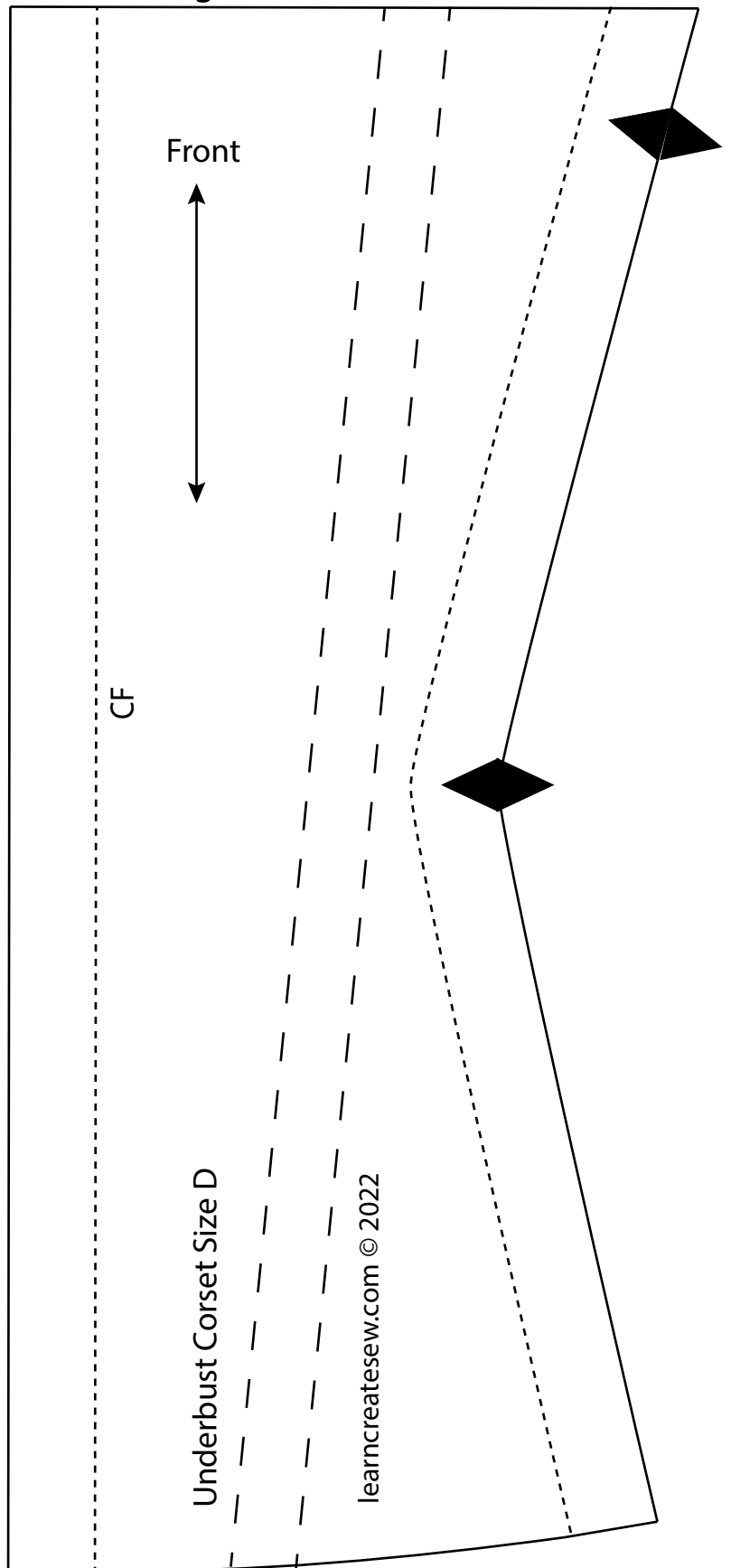
Use this front piece if you want a closed front corset with no center seam.

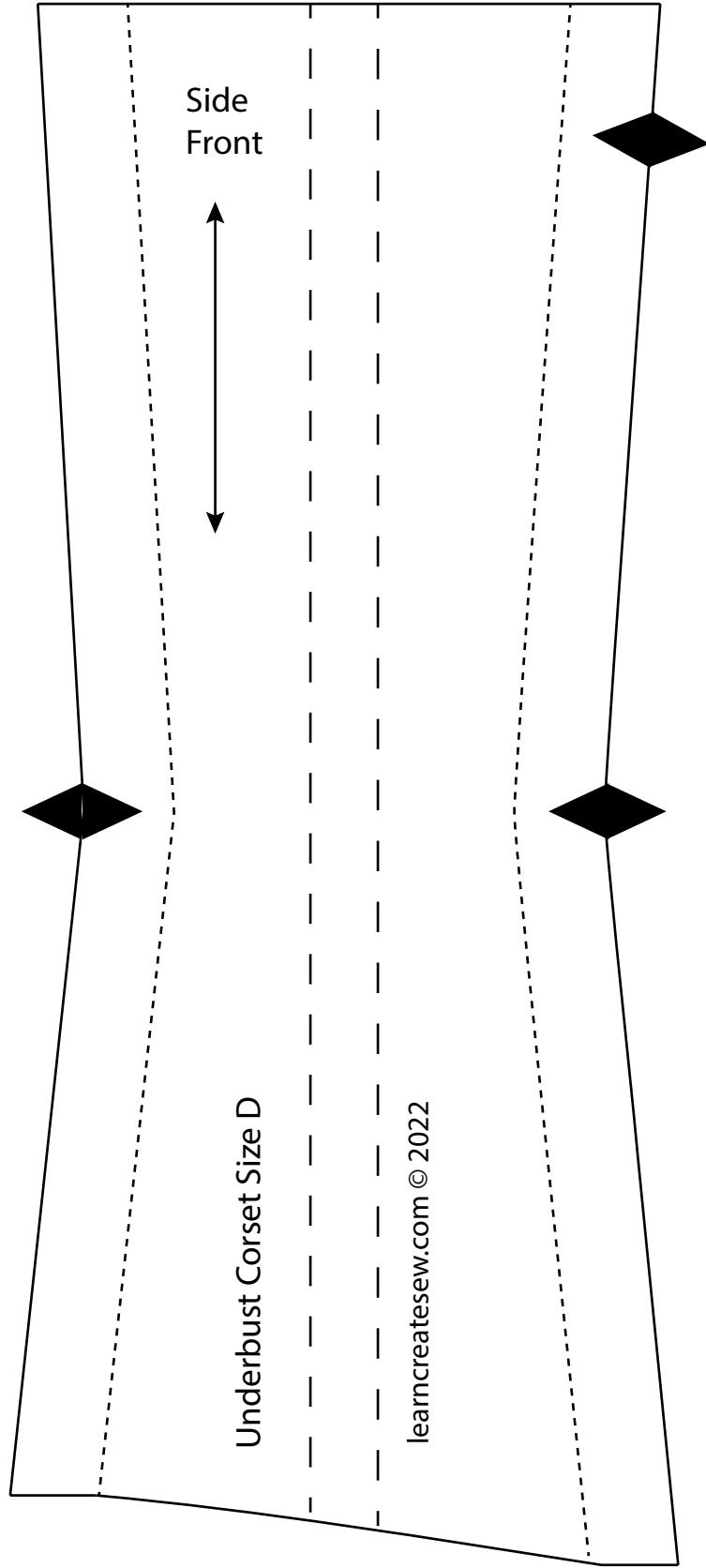


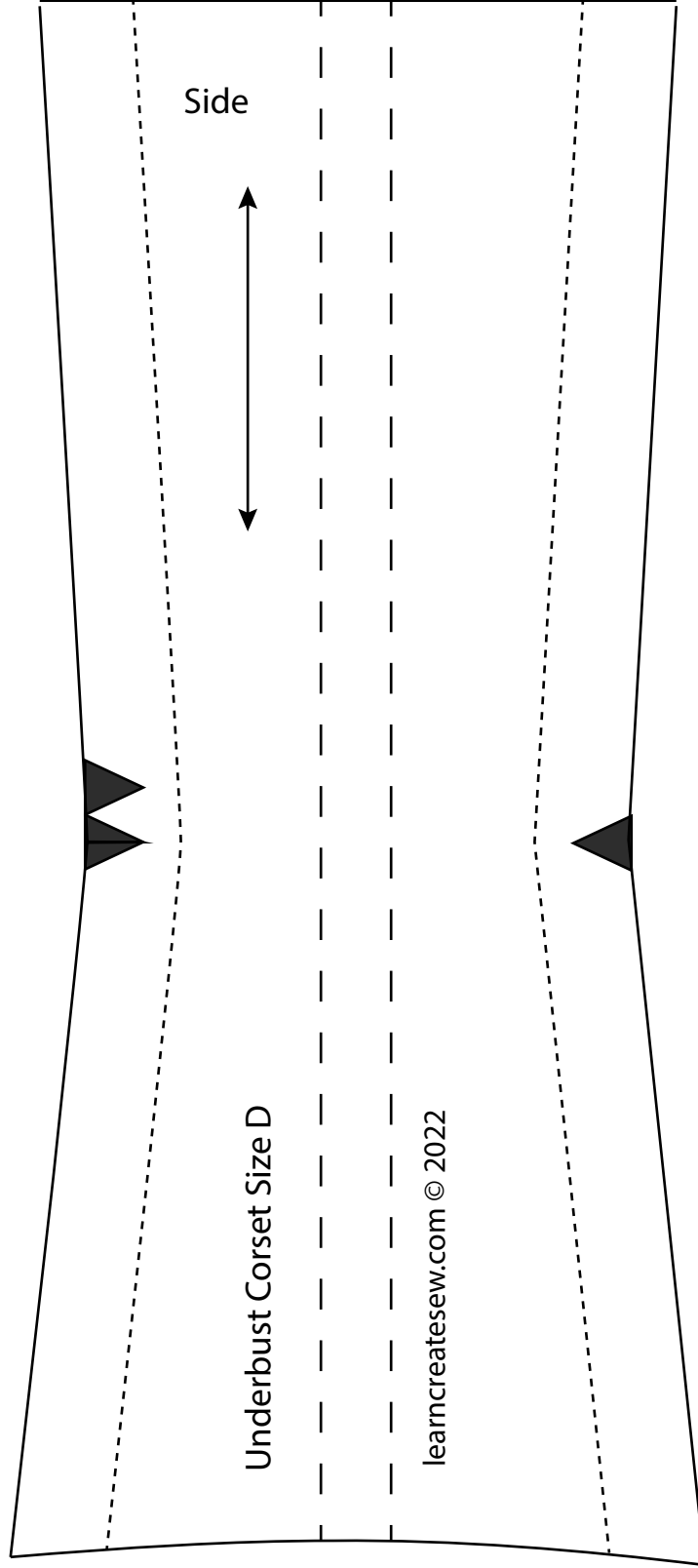
Facing is only needed on single layer corsets

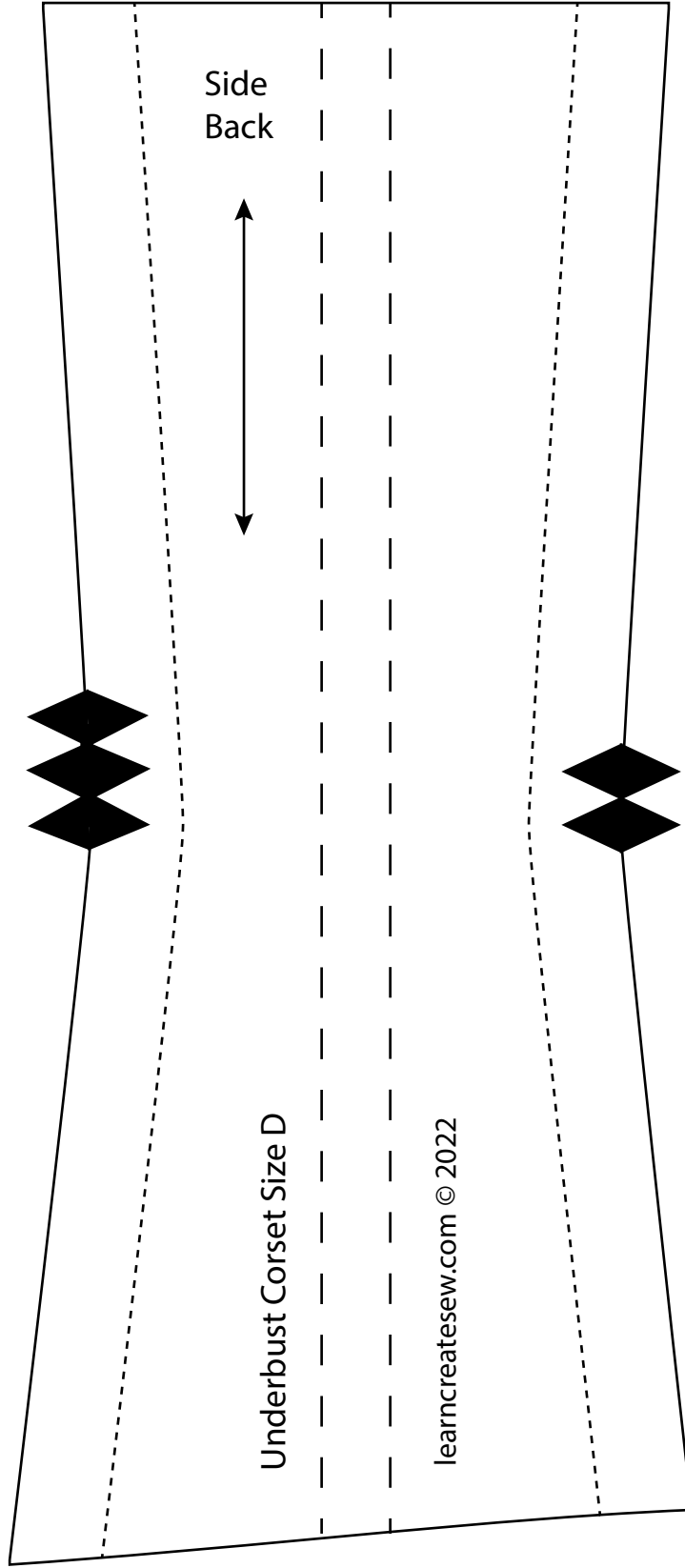


Use this front piece if you want a seam down the front of the corset or if you are inserting a busk.









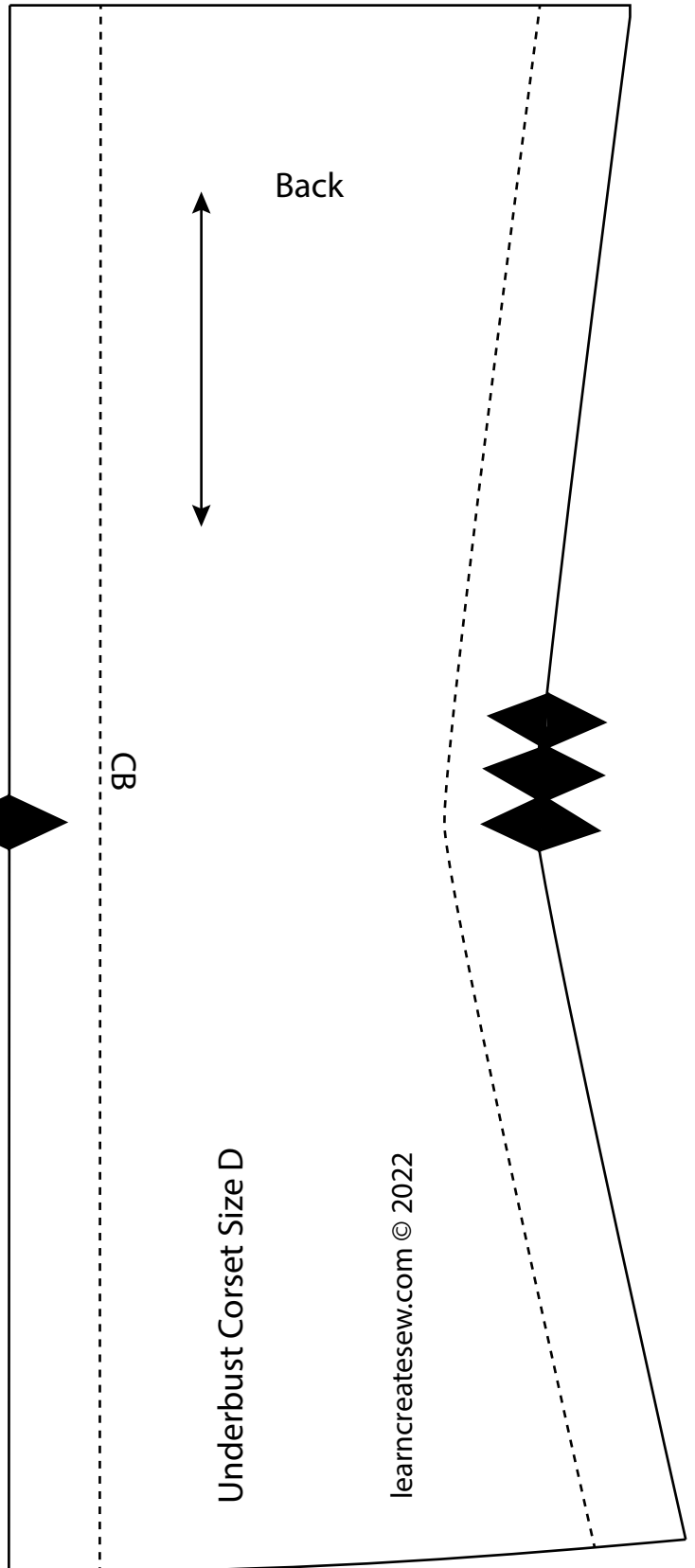
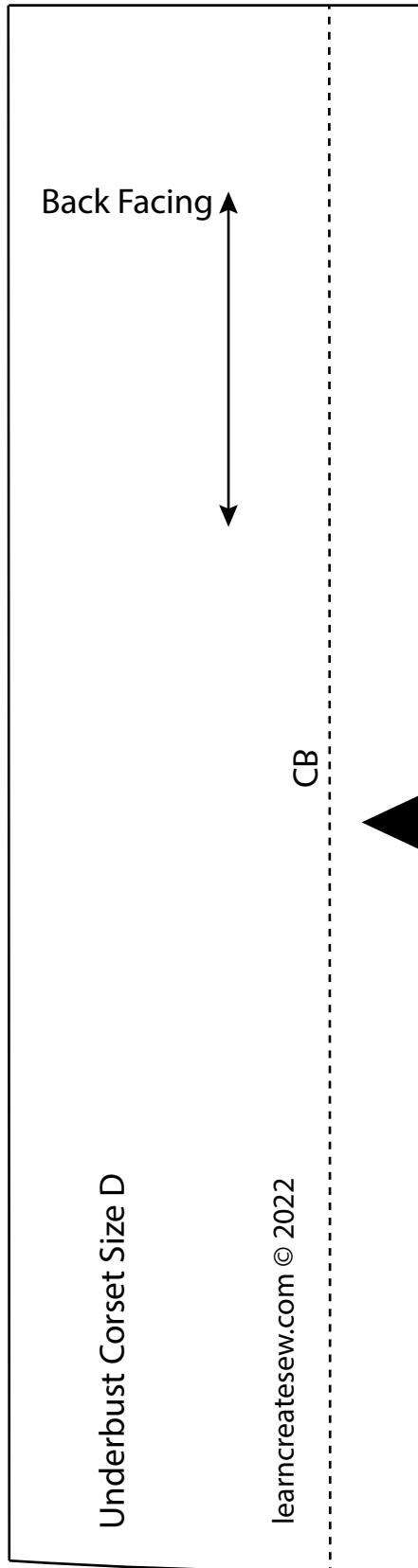
Side
Back



Underbust Corset Size D

learncreatesew.com © 2022

Facing is only needed on single layer corsets



Facing is only needed on single layer corsets

