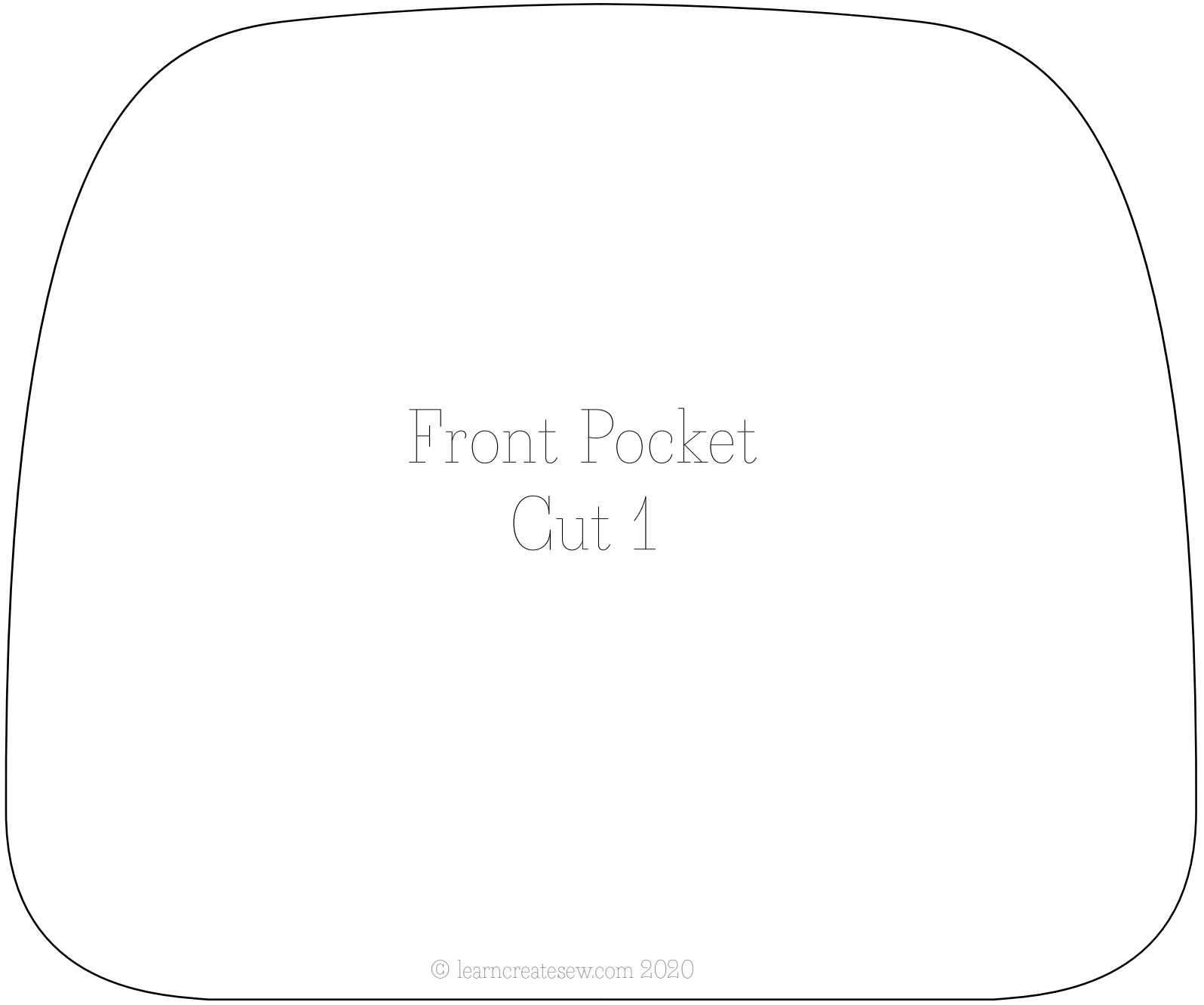


MINI BACKPACK PATTERN

When printing do NOT scale to fit.
Print actual size.

1 inch
test square

Front Pocket
Cut 1



Cut out both Top Back Main Gusset pattern pieces and tape together at dotted line before cutting your fabric.
Or instead of using the pattern, cut one 18 3/4 by 2 1/4 inch rectangles from the fabric for the top back main gusset.

Cut 2 pattern pieces and connect
here before cutting fabric

TOP Back Main Gusset

Cut 1

© learncreatesew.com 2020

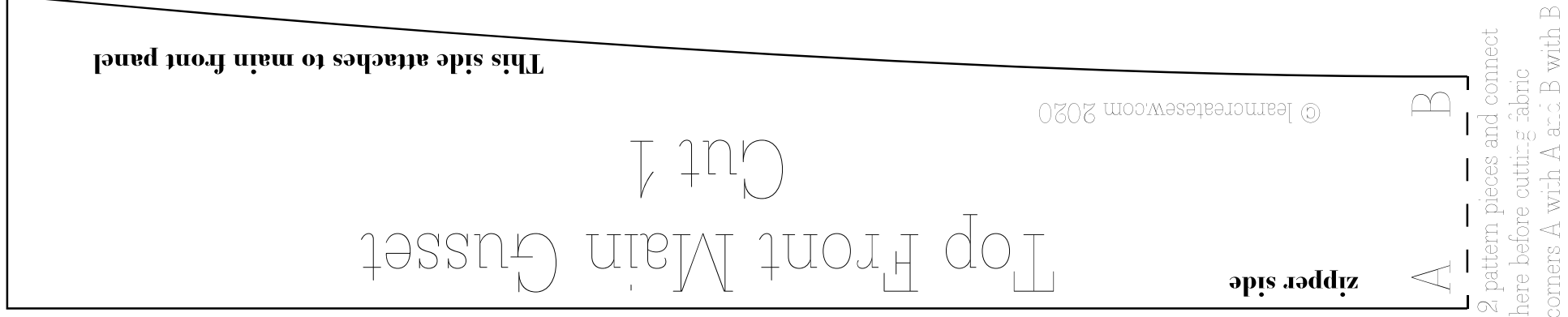
Cut 2 pattern pieces and connect
here before cutting fabric

TOP Back Main Gusset

Cut 1

© learncreatesew.com 2020

Cut 2 pattern pieces and connect
here before cutting fabric
Align corners A with A and B with B



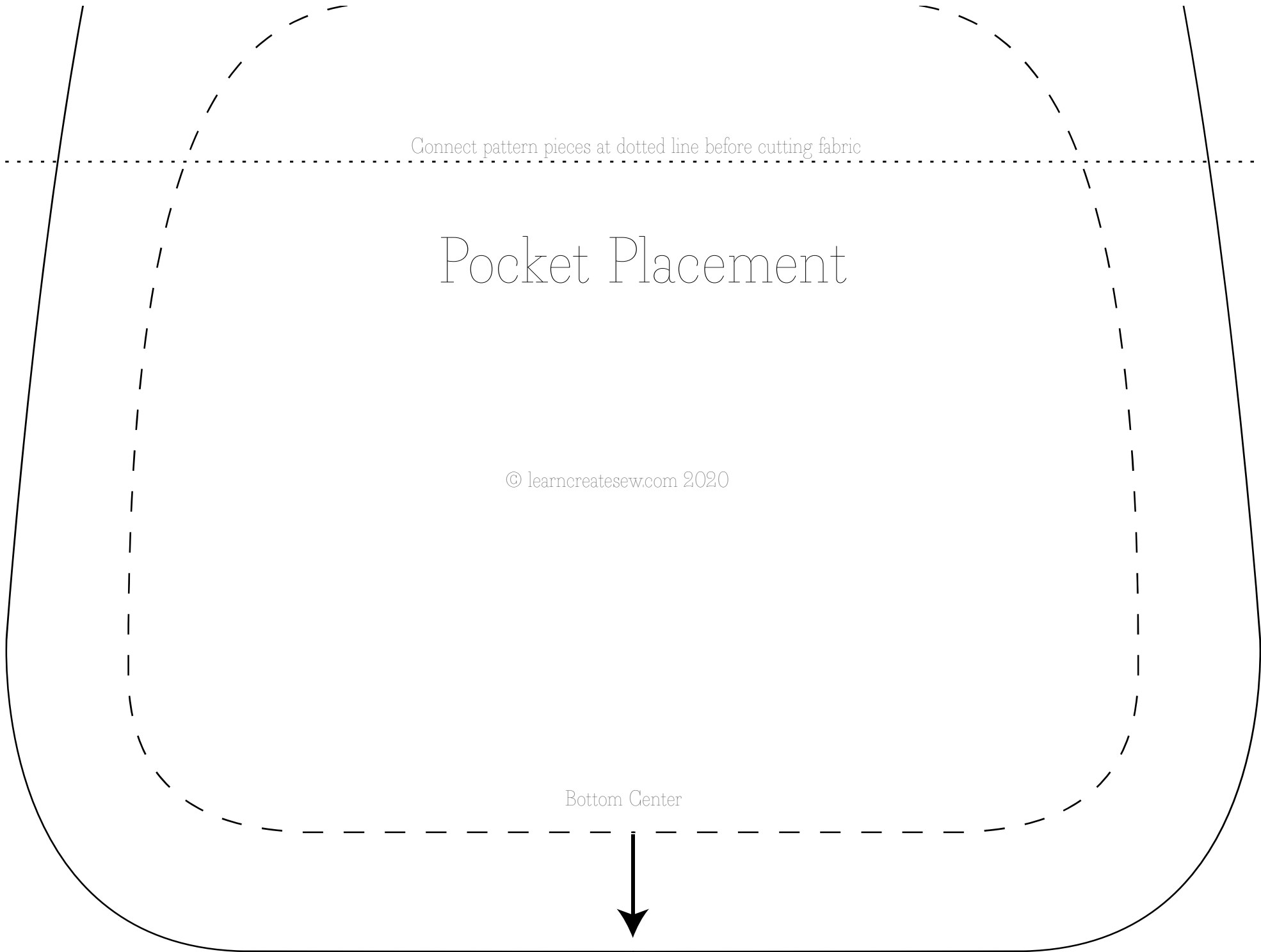
Cut 2 pattern pieces and connect
here before cutting fabric
Align corners A with A and B with B

Connect pattern pieces at dotted line before cutting fabric

Pocket Placement

© learncreatesew.com 2020

Bottom Center



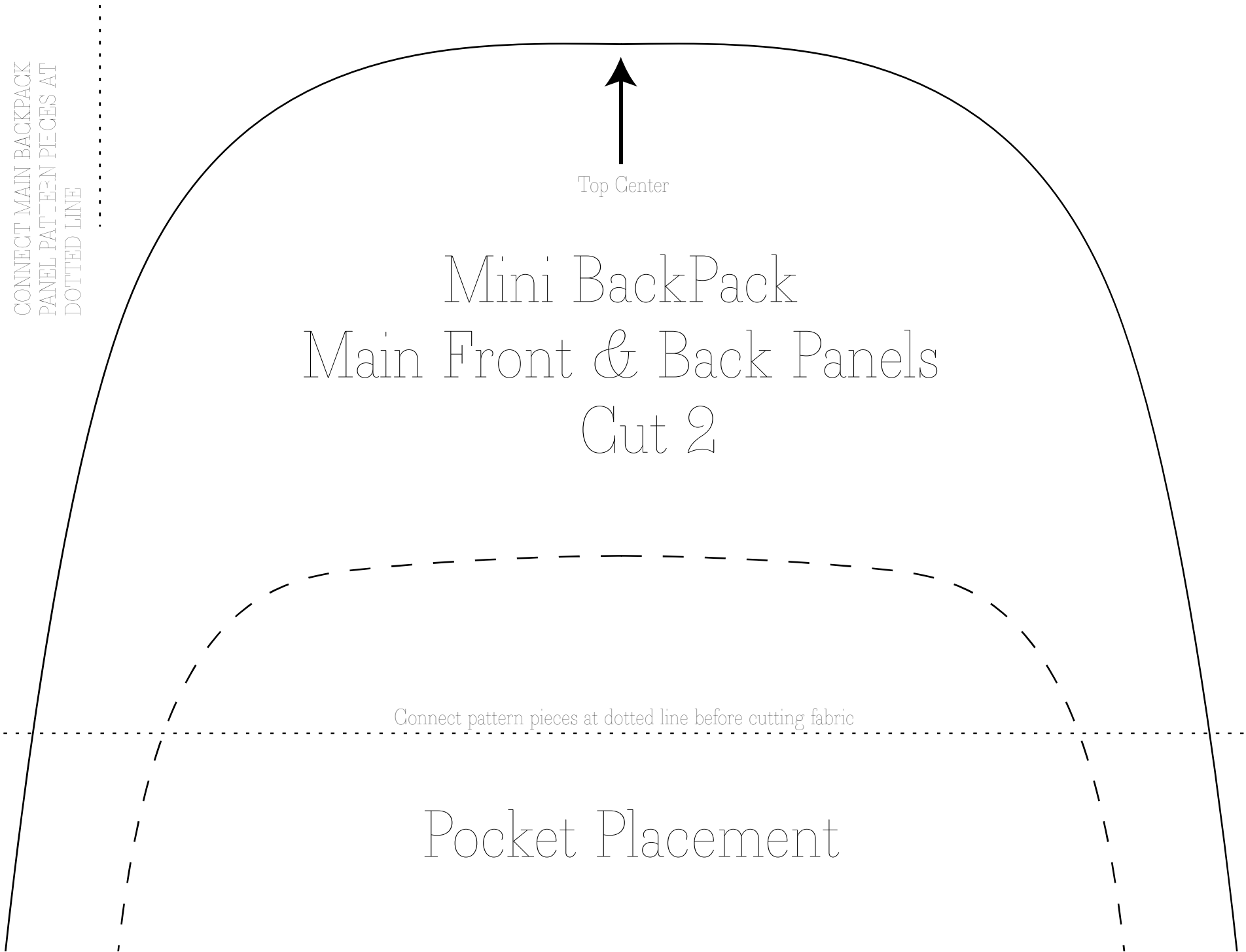
CONNECT MAIN BACKPACK
PANEL PATTERN PIECES AT
DOTTED LINE

↑
Top Center

Mini Backpack
Main Front & Back Panels
Cut 2

Connect pattern pieces at dotted line before cutting fabric

Pocket Placement



Main Bottom Gusset

© learncreatesew.com 2020

Directional Fabric:
Cut 2 on the Solid Line

Non-Directional Fabric:
Tape the 2 pattern pieces together
at the dotted line and Cut 1

For non-directional fabric

For directional fabric

***Directional Fabrics** are fabrics that need to be facing a certain direction to appear correct.

For example, fabric with words, characters, or stripes that need to be facing a certain way.

Non-Directional Fabrics always appear to be facing the correct direction, even when flipped upside down or rotated.

For example, solids and a lot of floral prints.

Main Bottom

Gusset

© learncreatesew.com 2020

Directional Fabric:

Cut 2 on the Solid Line

Non-Directional Fabric:

Tape the 2 pattern pieces together
at the dotted line and Cut 1

For non-directional fabric

For directional fabric

***Directional Fabrics** are fabrics that need to be facing a certain direction to appear correct.

For example, fabric with words, characters, or stripes that need to be facing a certain way.

Non-Directional Fabrics always appear to be facing the correct direction, even when flipped upside down or rotated.

For example, solids and a lot of floral prints.

Cut out both pocket bottom gusset pattern pieces and tape together at dotted line before cutting your fabric.
Or cut a 12 3/4 by 2 1/4 inch rectangle from the fabric for the bottom pocket gusset instead of using the pattern

Pocket Bottom Gusset -
Cut 1 from fabric

© learncreatesew.com 2020

Pocket Bottom Gusset -
Cut 1 From Fabric

© learncreatesew.com 2020

Cut out both pocket top gusset pattern pieces and tape together at dotted line before cutting your fabric.
Or cut two 12 1/4 by 1 1/4 inch rectangles from the fabric for the top pocket gusset instead of using the pattern

Pocket Top Gusset
(zipper panel) - cut 2

© learncreatesew.com 2020

Pocket Top Gusset
(zipper panel) - cut 2

© learncreatesew.com 2020