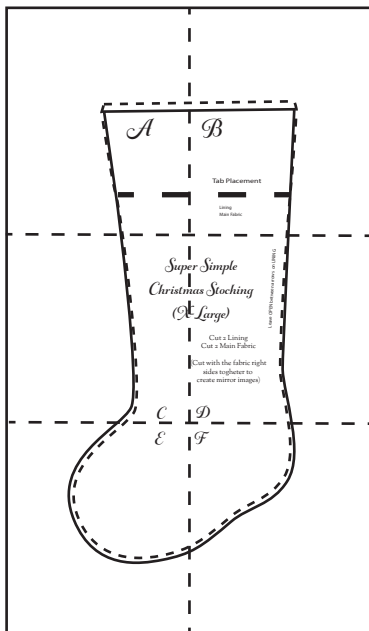


Tape the pattern pages together
aligning the thin dotted lines



A

Cuff Fold Line

B

Tab Placement



Lining

Main Fabric



*Super
Christmas
(A*

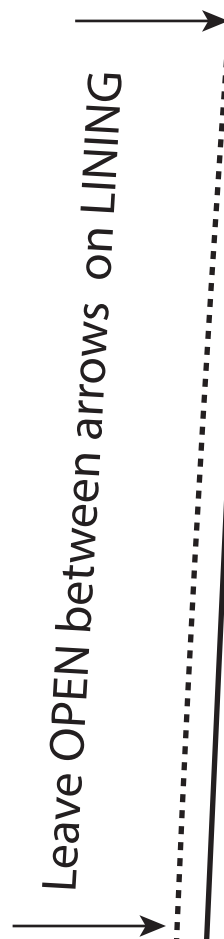
C

Super Simple
Christmas Stocking
(X-Large)

Cut 2 Lining
Cut 2 Main Fabric

(Cut with the fabric right
sides together to
create mirror images)

D



Ε

LearnCreateSew © 2020

F

