

*A*

Tab Placement



Cuff Fold Line



Lining  
Main Fabric



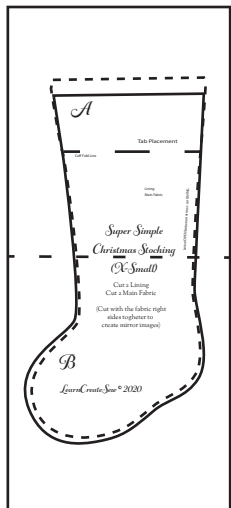
Leave OPEN between arrows on LINING



*Super Simple  
Christmas Stocking  
(X Small)*

*(X Small)*

Tape the pattern pages together aligning the thin dotted lines



*Christmas Stocking*

*(X-Small)*

Cut 2 Lining  
Cut 2 Main Fabric

(Cut with the fabric right  
sides together to  
create mirror images)

*B*

*LearnCreateSew* © 2020