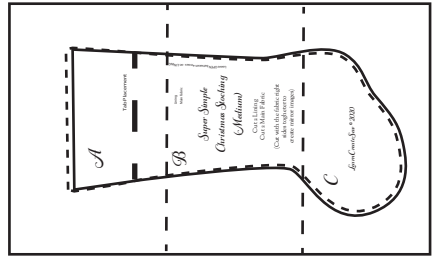


Tape the pattern pages together
aligning the thin dotted lines



Tab Placement

Cuff Fold Line

A

A

B

C

Super Simple
Christmas Stocking
(Medium)
Curling
(Do with the fabric side
of the pattern facing
outward)
© 2010
For Cursive 2010

5NI

B

Lining
Main Fabric _____

*Super Simple
Christmas Stocking
(Medium)*

Cut 2 Lining
Cut 2 Main Fabric

(Cut with the fabric right
sides together to
create mirror images)

Leave OPEN between arrows on LINING



C

LearnCreateSew © 2020

