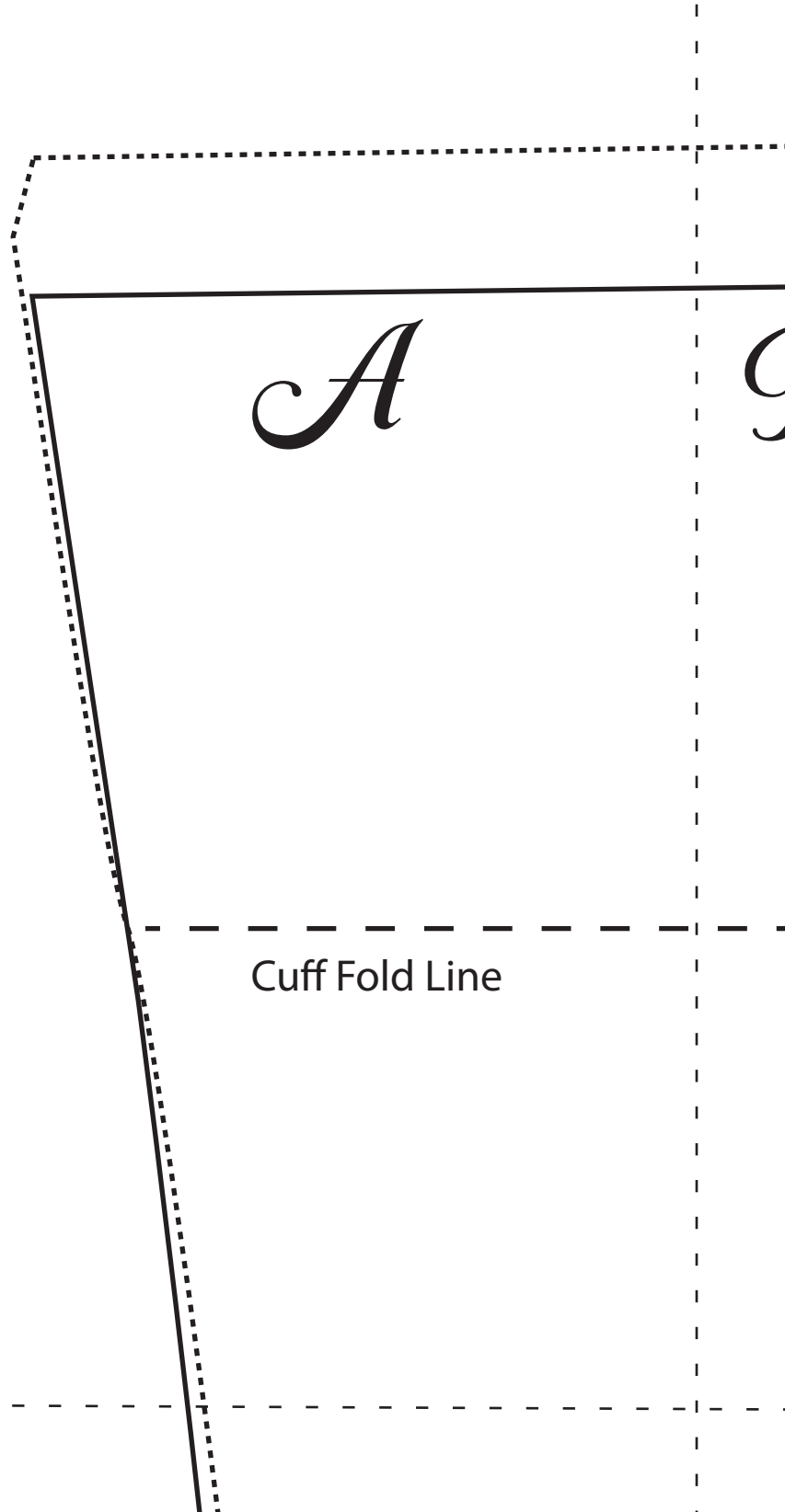
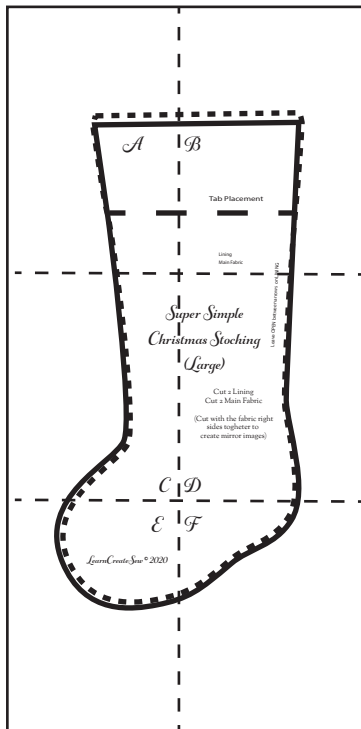


Tape the pattern pages together  
aligning the thin dotted lines



*B*

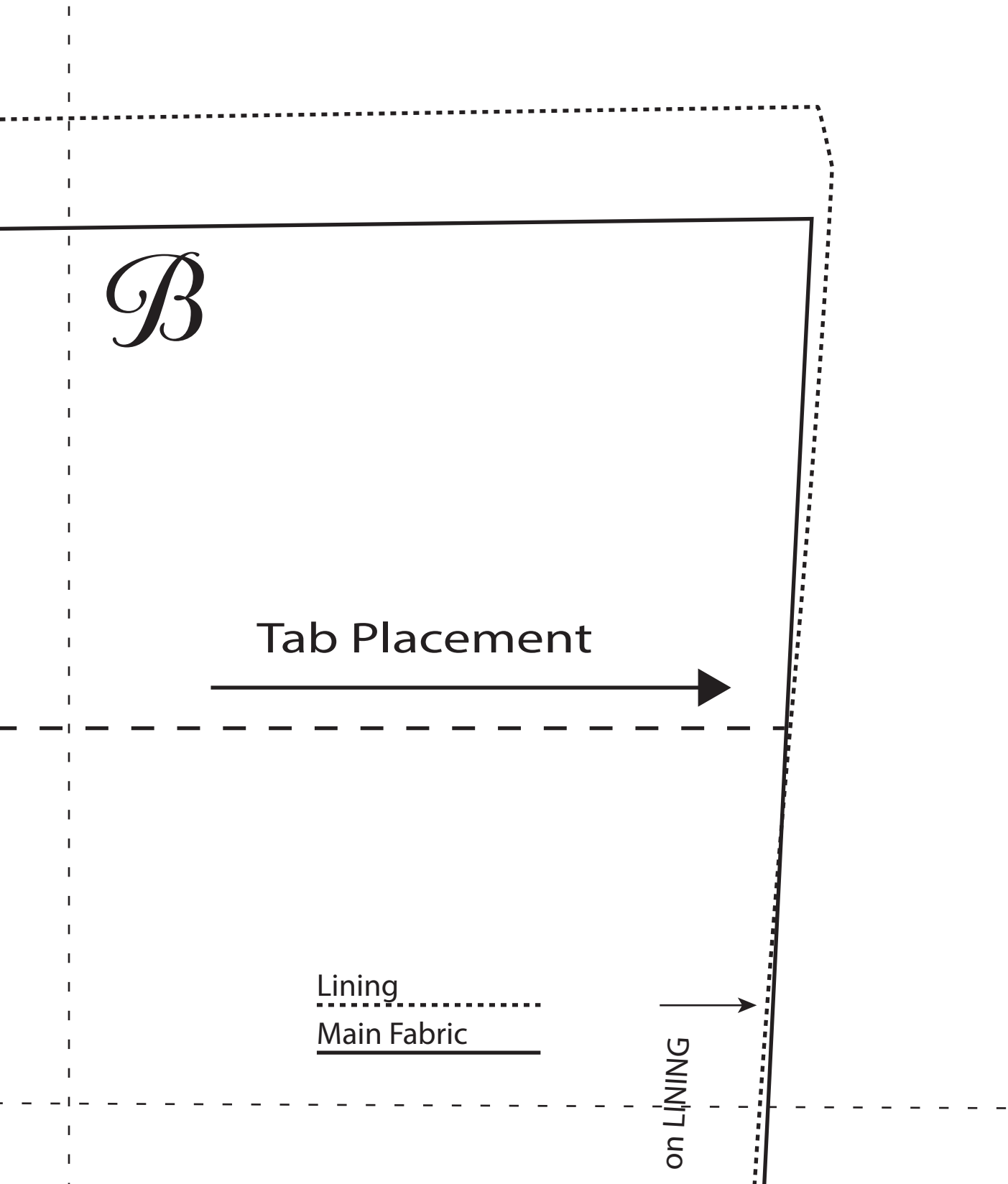
Tab Placement



Lining  
Main Fabric



on LINING



*Sup*  
*Christm*

*(*

*C* *G*

*Super Simple  
Christmas Stocking  
(Large)*

Cut 2 Lining  
Cut 2 Main Fabric

(Cut with the fabric right  
sides together to  
create mirror images)

*D*

Leave OPEN between arrows on LINING



U  
E

*LearnCreateSew* © 2020

*D*

*F*

