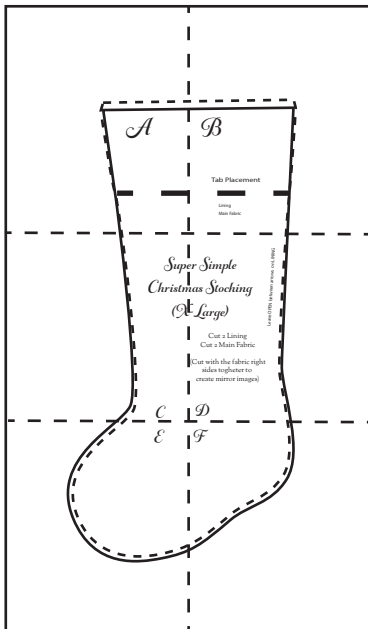


A

Tape the pattern pages together
aligning the thin dotted lines



Cuff Fold Line

B

Tab Placement



Lining



Main Fabric



IG

Sup
Christm
(X)

C

Super Simple

Christmas Stocking

(XX-Large)

Cut 2 Lining
Cut 2 Main Fabric

(Cut with the fabric right
sides together to
create mirror images)

D

Leave OPEN between arrows on LINING

Ε

LearnCreateSew © 2020

F

