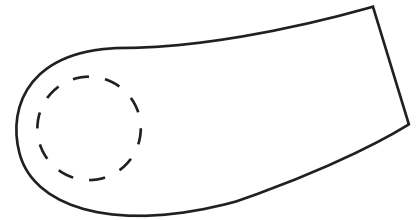
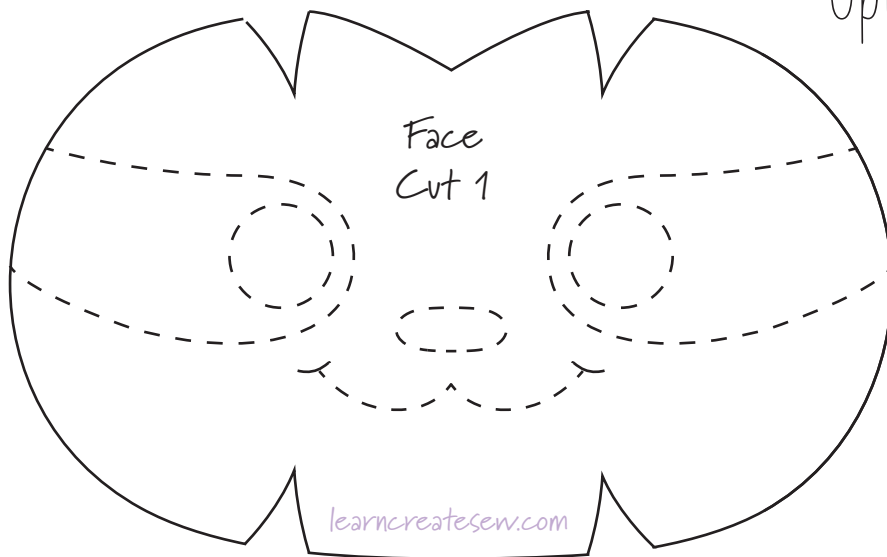


SLOTH PATTERN

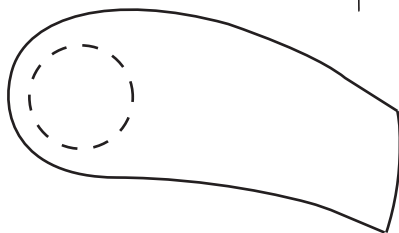
learncreatesew.com
© 2019

Choose a face option...

Option 1

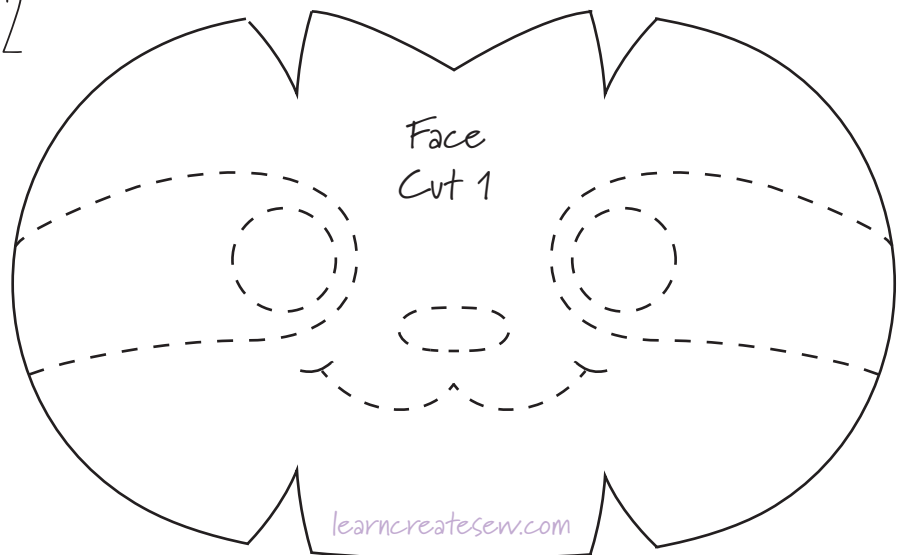



Option 2



Eye Accent
Cut 2
(1 & 1 Reverse)

Cut eye accent fabric on the line





A large, hand-drawn pattern piece for the back of a sloth's body. It has a pointed top and curved sides. A purple arrow points downwards from the top center.

Body Back Cut 1

Seam allowance included
Cut fabric on the line

learncreatesew.com



Nose

Cut 1 (Felt)
Cut fabric on the line



A hand-drawn pattern piece for the bottom of a sloth's body. It is roughly circular with a small notch at the top and a small protrusion at the bottom. A purple arrow points downwards from the left side.

Body Bottom Cut 1

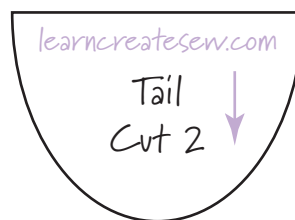
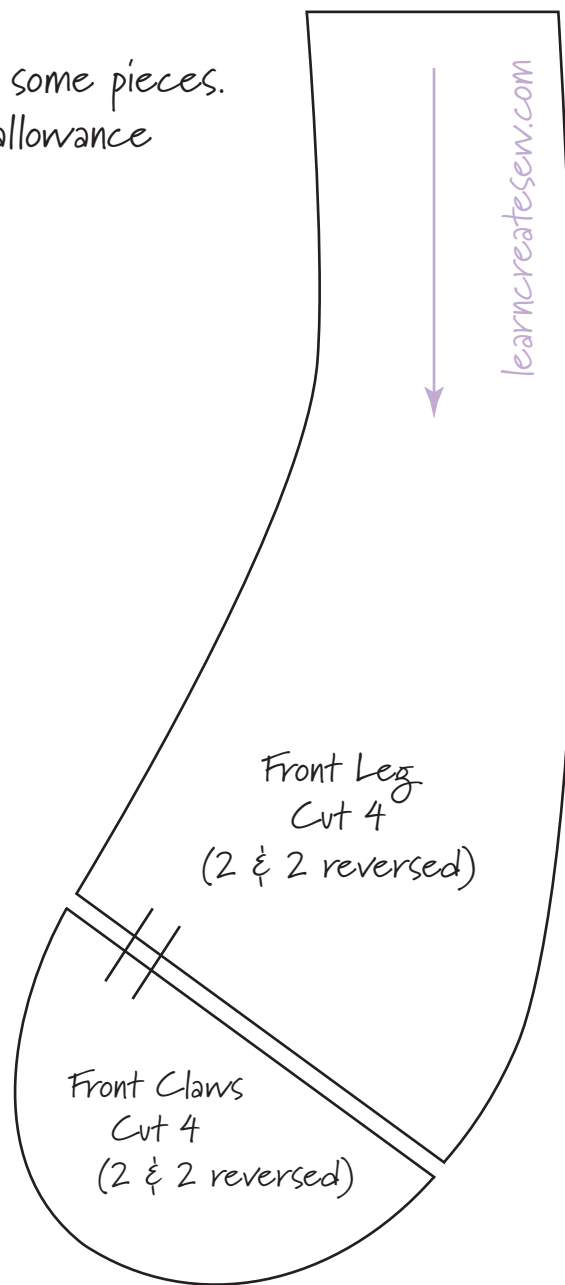
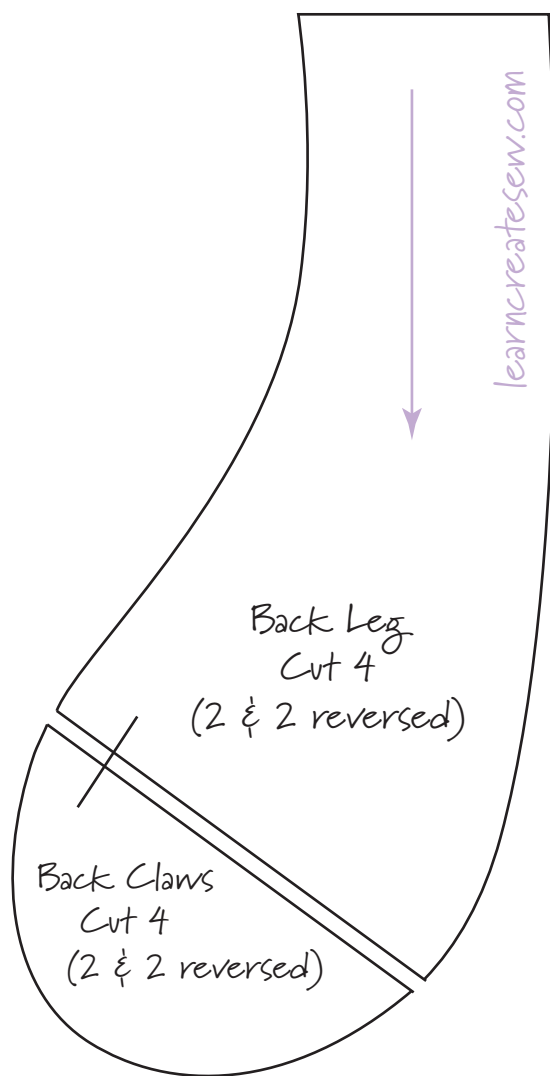
learncreatesew.com

SLOTH PATTERN

learncreatesew.com

© 2019

The seam allowance is NOT included on some pieces.
Cut fabric adding a 1/4 inch seam allowance
unless otherwise indicated.



SLOTH PATTERN

learncreatesew.com

© 2019



SLOTH PATTERN

learncreatesew.com

© 2019

Arrows indicate the direction of the nap.